

**Sound products.**

The image features a black background with vibrant, abstract light trails in shades of blue and green. These trails are concentrated in the upper half of the frame, appearing as if they are moving or vibrating. The lower half of the image is mostly white, with some faint, blurred light trails at the very bottom.

**Black.**

## The d&b System reality.

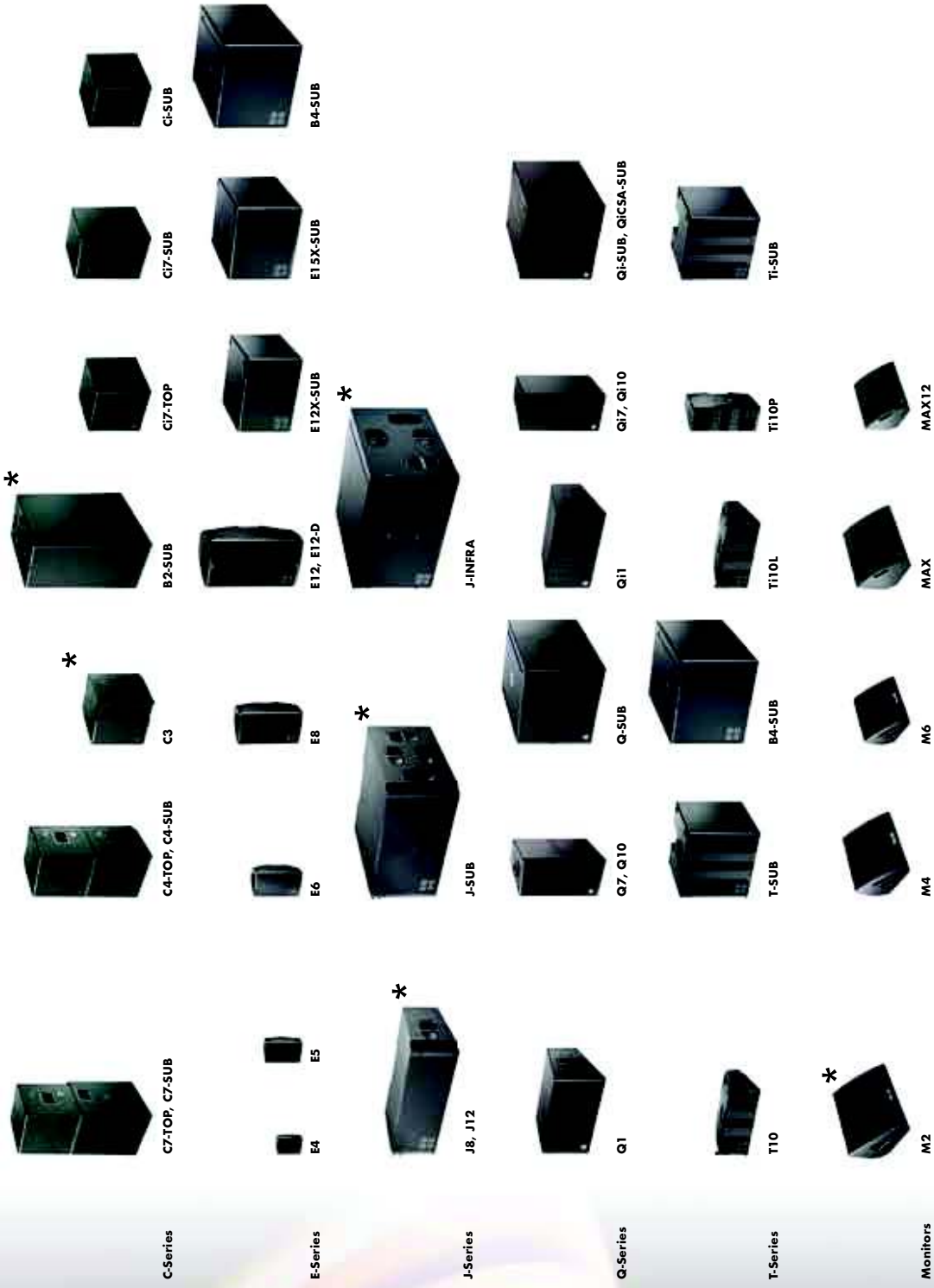


d&b

As the name implies a d&b system is not just a loudspeaker. Nor is it merely a sum of the components: loudspeakers, control electronics, mechanical accessories and remote control. Right from the outset the d&b audioteknik approach was to build integrated sound reinforcement systems that were actually more than the sum of their parts: an entirety where each fits all. Every element is tightly specified, precisely aligned and

carefully integrated to achieve maximum possible performance, along with neutral sound characteristics. At the same time d&b offers integrated training, technical information, expert service and support, as well as a knowledgeable distribution network, so that the same optimal acoustic result is achieved by every system anywhere, at any time. So in reality: the d&b System reality.

# The Black range.



\* D12 only



## The C-Series. Cubes and cuboids.

These distinctive cabinet shapes, these cubes and cuboids, illustrate an important aspect of the d&b System reality: the systems of the C-Series can be neatly stacked, combined in mixed configurations and scaled for efficient and cost effective reinforcement solutions. The C-Series systems range in performance according to their practical application with each delivering high output and it goes without saying, with minimum distortion. The widely acclaimed C4 system is the big brother of the Series: ideal for large to medium scale touring applications or for single setups requiring narrow dispersion over a wide frequency range. The C3 line array module with its 5° vertical dispersion is the long throw extension to the C4 system. Its compatibility with the C4 in design, dimensions, hardware and 35° horizontal dispersion enable C3/C4 array configurations to be scaled both horizontally and vertically from the very small to the rather large. For formidably extended bass requirements the B2 subwoofer with its ample high sound pressure level is ideal. The C7-TOP and C7-SUB systems are especially suited for

small to medium applications, concerts and industrial productions where controlled dispersion over a wide bandwidth is needed. Where a more powerful full range PA system is required, a stack of one C7-TOP and two C7-SUBs will perform with sufficient headroom. The C7-TOP and C7-SUB are special versions of these established loudspeakers and along with the C7-SUB, which is the dedicated subwoofer for flown array situations with the C7-TOP, each and every one are designed for permanently installed rider driven performance spaces. Indeed, the C7 cabinets differ only in their unobtrusive mounting hardware allowing aesthetic integration and the ability to colour coordinate both the system and rigging to visual requirements. They can also be provided with protection for use in climatically hostile environments. Whether with or without the "i", whether cubes or cuboids, they all cement the mix for good sound.



C-Series	C7-TOP	C7-SUB	C4-TOP	C4-SUB	C3	B2-SUB
Live music	■ <sup>1</sup>	■	■ <sup>1</sup>	■	■ <sup>1</sup>	■ <sup>1</sup>
Playback	■ <sup>2</sup>	■	■ <sup>1</sup>	■	■ <sup>1</sup>	■ <sup>1</sup>
Speech	■	■	■ <sup>1</sup>	■	■	■
Stage monitor						
Subwoofer	■	■	■	■	■ <sup>3</sup>	■ <sup>3</sup>
<b>Components</b>	15" / 1.3"	18"	12" / 2"	18"	2 x 10" / 3 x 1.3"	2 x 18"
<b>Output (1 m)</b> <sup>4</sup> with <b>D6/D12</b>	134 / 138 dB SPL	131 / 135 dB SPL	136 / 140 dB SPL	131 / 135 dB SPL	144 dB SPL <sup>5</sup>	139 dB SPL <sup>5</sup>
<b>Power ratings</b> <sup>6</sup>	200 / 800 W	400 / 1200 W	200 / 800 W	200 / 800 W	600 / 2400 W	600 / 2400 W
<b>Power ratings</b> <sup>6</sup> <b>LOW</b>					500 / 2000 W	
<b>Power ratings</b> <sup>6</sup> <b>HIGH</b>					130 / 600 W	
<b>Frequency response (-5 dB)</b>	68 Hz - 18 kHz	44 Hz - 140 Hz	150 Hz - 18 kHz	50 Hz - 150 Hz	130 Hz - 16 kHz <sup>7</sup>	37 Hz - 100 Hz / 32 Hz - 68 Hz <sup>8</sup>
<b>Dispersion (H x V)</b>	75° x 40° CD <sup>9</sup>		35° x 35° CD <sup>10</sup>		35° x (5°) <sup>11</sup>	
<b>Cabinets per channel D6/D12</b>	2	2	2	2	2 <sup>12</sup>	1 <sup>12</sup>
<b>Dimensions mm (H x W x D)</b>	580 x 580 x 620 <sup>13</sup>	740 x 580 x 620 <sup>13</sup>	580 x 580 x 620 <sup>13</sup>	580 x 580 x 620 <sup>13</sup>	580 x 580 x 620 <sup>13</sup>	1160 x 580 x 920 <sup>13</sup>
<b>Weight kg</b>	52	49	58	48	71	102
<b>Dimensions inch (H x W x D)</b>	22.8 x 22.8 x 24.4 <sup>13</sup>	29.1 x 22.8 x 24.4 <sup>13</sup>	22.8 x 22.8 x 24.4 <sup>13</sup>	22.8 x 22.8 x 24.4 <sup>13</sup>	22.8 x 22.8 x 24.4 <sup>13</sup>	45.6 x 22.8 x 36.2 <sup>13</sup>
<b>Weight lb</b>	117	108	128	106	156	225

Application information is presented for guidance only. dBb reserves the right to make any necessary changes to the products and the published specifications. As part of the ongoing development program dBb tries to maintain the highest degree of product compatibility.

■ recommended use CD: loudspeaker with constant directivity horn. <sup>1</sup>with subwoofer. <sup>2</sup>with a subwoofer suitable for music and high level program. <sup>3</sup>NFRA mode to use with C4 system. <sup>4</sup>SPL max/peak, test signal: pink noise with crest factor 4. <sup>5</sup>D12 only. <sup>6</sup>RMS/peak. <sup>7</sup>two cabinets. <sup>8</sup>NFRA mode. <sup>9</sup>≥ 600 Hz. <sup>10</sup>≥ 700 Hz. <sup>11</sup>cylindrical wave segment. <sup>12</sup>used in 2-Way Active mode with D12 only, 2 x C3 or 1 x B2-SUB per D12. <sup>13</sup>dimensions without wheels.



C7-TOP, C7-SUB

C4-TOP, C4-SUB

C3

B2-SUB

C17-TOP

C17-SUB

C1-SUB



## C-Series

## C17-SUB

## C17-TOP

## C1-SUB

Live music	■		
Playback	■ <sup>1</sup>		
Speech	■		
Stage monitor			
Subwoofer	■	■	■
Components	15" / 1.5"	18"	18"
Output (1m) <sup>3</sup> with D6/D12	134 / 138 dB SPL	131 / 135 dB SPL	129 / 133 dB SPL
Power rating <sup>4</sup>	200 / 800 W	400 / 1200 W	400 / 1200 W
Frequency response (-5 dB)	68 Hz - 18 kHz	44 Hz - 140 Hz	44 Hz - 140 Hz
Dispersion (H x V)	75° x 40° CD <sup>5</sup>		
Cabinets per channel D6/D12	2	2	2
Dimensions mm (H x W x D)	580 x 580 x 620	740 x 580 x 620	580 x 580 x 620
Weight kg	50	45	39
Dimensions inch (H x W x D)	22.8 x 22.8 x 24.4	29.1 x 22.8 x 24.4	22.8 x 22.8 x 24.4
Weight lb	110	99	86

Application information is presented for guidance only. dBb reserves the right to make any necessary changes to the products and the published specifications. As part of the ongoing development program dBb tries to maintain the highest degree of product compatibility.

■: recommended use CD: loudspeaker with constant directivity horn <sup>1</sup>with subwoofer <sup>2</sup>with a subwoofer suitable for music and high level program <sup>3</sup>SPL<sub>max</sub>/peak, test signal, pink noise with crest factor <sup>4</sup>4RMS/peak <sup>5</sup>≥ 600 Hz

## The E-Series. Teenyweeny, small and versatile.

The smallest loudspeaker within the E-Series is a tad bigger than a postcard, whilst the biggest measures a mere 60 cm in height. The E4, E5, E6, E8 and E12/E12-D all embody what the dBb System reality makes possible: variety within the Series and the versatility of each system. With their lightweight, ultra compact designs and finely scaled formats, together with remarkable output and performance levels, the E-Series provides the answer to a wide variety of production requirements. The cabinets with their functional forms, ability to be deployed either horizontally or vertically, robust lightweight enclosures and bespoke hardware, are highly versatile. Quick and easy to handle, they offer elegant solutions for speech, music and distributed reinforcement and without

being modest, perform impressively in a variety of applications: in stand-alone full range use, in flown or high stand use, in surround sound, as delay and fill systems or, even as stage monitors. Finally for those individual requirements the loudspeakers are available with custom colours and weather resistant options. Substantial bass extension for all loudspeakers of the E-Series is delivered by two dedicated and similarly compact, powerful subwoofers. Alternatively the B4 cardioid subwoofer can be employed, which uses only one amplifier channel and typical of dBb, it acoustically matches all the loudspeakers within the E-Series. In short, the E-Series points to a broad canvas.



E4

E5

E6

E8

E12 • E12-D

E12X-SUB

E15X-SUB

B4-SUB



E-Series	E4	E5	E6	E8	E12 • E12-D	E12X-SUB	E15X-SUB	B4-SUB
Live music			■ <sup>1</sup>	■ <sup>1</sup>	■ <sup>2</sup>			
Playback	■ <sup>1</sup>	■ <sup>1</sup>	■ <sup>1</sup>	■ <sup>1</sup>	■ <sup>2</sup>			
Speech	■	■	■	■	■			
Stage monitor			■	■	■			
Subwoofer						■	■	
<b>Components</b>	4" / 0.75" coaxial	5" / 1" coaxial	6.5" / 1" coaxial	8" / 1" coaxial	12" / 1.3" coaxial	12"	15"	Front 1.5" / Rear 1.2"
<b>Output (1m)<sup>3</sup> with D6/D12</b>	114 / 115 dB SPL	116 / 117 dB SPL	120 / 123 dB SPL	126 / 129 dB SPL	131 / 134 dB SPL • 130 / 133 dB SPL	124 / 127 dB SPL	127 / 130 dB SPL	128 / 131 dB SPL
<b>Power rating<sup>4</sup></b>	60 / 400 W	60 / 400 W	150 / 800 W	150 / 800 W	300 / 1,600 W	300 / 1,600 W	300 / 1,600 W	500 / 2,000 W
<b>Frequency response (-5 dB)</b>	130Hz-20kHz	85Hz-20kHz	85Hz-20kHz	62Hz-18kHz	50Hz-18kHz	45Hz-100Hz	37Hz-140Hz	40Hz-150Hz
<b>Dispersion (H x V)</b>	100° conical	100° conical	100° x 55° CD <sup>5</sup>	90° x 50° CD <sup>5</sup>	80° x 50° CD <sup>5</sup> • 110° x 50° CD <sup>5</sup>			
<b>Cabinets per channel D6/D12</b>	4	4	4	4	2	2	2	2
<b>Dimensions mm (H x W x D)</b>	150 x 120 x 106	230 x 154 x 155	300 x 188 x 175	390 x 232 x 223	580 x 350 x 334	358 x 330 x 448	426 x 530 x 550	476 x 580 x 800
<b>Weight kg</b>	1.1	2.2	5	7.3	1.6	18	24	44
<b>Dimensions inch (H x W x D)</b>	5.9 x 4.7 x 4.2	9 x 6 x 6.1	11.8 x 7.4 x 7	15.4 x 9.1 x 8.8	22.8 x 13.8 x 13.2	14.1 x 20.9 x 17.6	16.8 x 20.9 x 21.7	18.7 x 22.8 x 31.6
<b>Weight lb</b>	2.4	4.8	11	16.1	3.5	40	53	97

Application information is presented for guidance only. dBb reserves the right to make any necessary changes to the products and the published specifications.

As part of the ongoing development program dBb tries to maintain the highest degree of product compatibility.

■: recommended use CD: loudspeaker with constant directivity horn <sup>1</sup>with subwoofer <sup>2</sup>with a subwoofer suitable for music and high level program

<sup>3</sup>SPL<sub>max</sub>peak, test signal: pink noise with crest factor 4 <sup>4</sup>RMS/peak <sup>5</sup>from 90° rotatable





## The J-Series. Pushing all the boundaries.



The somewhat larger sized but incredibly powerful J-Series reaches into large-scale sound reinforcement situations, extending further the spectrum of applications d&b systems embrace. The transparent and detailed audio performance with extraordinarily smooth and even frequency response, dynamic bandwidth, high power and headroom capabilities, makes the J-Series an exceptionally good choice for the far reaching reinforcement of any sound genre. The J-Series consists of the J8 and J12 loudspeakers and the J-SUB, which are acoustically matched and constructed to be mechanically compatible both in flown or ground stacked arrays. For extended frequency response the J-INFRA cardioid subwoofer can be used to supplement the system in various combinations. The high fidelity J-Series, pushing all the boundaries, is and stays a paragon of the d&b System reality; maintaining the compatibility and sound character throughout all systems enabling them to be effortlessly combined.

J-Series	J8	J12	J-SUB	J-INFRA
Live music	■ 1	■ 1		
Playback	■ 2	■ 2		
Speech	■	■		
Stage monitor			■	
Subwoofer				■
<b>Components</b>	2 x 12" / 10" / 2 x 1.4"	2 x 12" / 10" / 2 x 1.4"	3 x 18"	3 x 21"
<b>Output (1 m)<sup>3</sup> with D12</b>	145 dB SPL	145 dB SPL	138 dB SPL	141 dB SPL
<b>Power rating<sup>4</sup> LOW</b>	500 / 2000 W	500 / 2000 W	800 / 3200 W <sup>5</sup> , 400 / 1600 W <sup>6</sup>	1200 / 4800 W <sup>5</sup> , 600 / 2400 W <sup>6</sup>
<b>Power rating<sup>4</sup> HIGH</b>	200 / 800 W	200 / 800 W	200 / 800 W	200 / 800 W
<b>Frequency response (-5 dB)</b>	48 Hz - 17 kHz	48 Hz - 17 kHz	32 Hz - 100 Hz	27 Hz - 60 Hz
<b>Dispersion (H)</b>	80° <sup>7</sup>	120° <sup>7</sup>		
<b>Cabinets per D12</b>	2 <sup>8</sup>	2 <sup>8</sup>	1 <sup>8</sup>	1 <sup>8</sup>
<b>Dimensions mm (H x W x D)</b>	360 x 1100 x 570	360 x 1100 x 570	540 x 1100 x 945 <sup>9</sup>	685 x 1180 x 1040 <sup>9</sup>
<b>Weight kg</b>	60	60	106	152
<b>Dimensions inch (H x W x D)</b>	14.2 x 43.3 x 22.4	14.2 x 43.3 x 22.4	21.3 x 43.3 x 37.2 <sup>9</sup>	27 x 46.5 x 41 <sup>9</sup>
<b>Weight lb</b>	132	132	234	335

Application information is presented for guidance only. dBb reserves the right to make any necessary changes to the products and the published specifications. As part of the ongoing development program dBb tries to maintain the highest degree of product compatibility.

■ 1: recommended use 1 with subwoofer 2 with a subwoofer suitable for music and high level program 3 SPL max peak, test signal; pink noise with crest factor 4 4 RMS / peak 5 front drivers 6 rear driver 7 = 250 Hz 8 used in 2-Way Active mode only 9 dimensions without wheels



J8, J12

J-SUB

J-INFRA

## The Q-Series. Flexible flexibility.

The Q-Series presents an idea that is not without appeal whereby it combines a variety of technologies with remarkable results; conventional rotatable CD horns, dipolar driver arrangements and toroidal waveshaping devices integrated using line array principles. It comprises the Q1 line array loudspeaker and the Q7 and Q10 stand-alone cabinets, whilst bass extension is delivered by the dedicated Q subwoofer. The exceptional Q factor possesses precise dispersion control down to very low frequencies and, for their size and weight, these loudspeakers produce surprisingly high sound pressure levels. The flexible Q-Series can just as easily be used as stand-alone systems or scalably combined for a multitude of small to large array configurations. They

are really ideal for situations using numerous open microphones and where considerable gain before feedback is required for speech and music; in theatres, presentations, orchestral events and broadcast productions. The Qi loudspeakers are special versions of these established cabinets and along with the Qi subwoofers are designed for permanently installed rider driven performance spaces. The Qi cabinets differ only in their unobtrusive mounting hardware allowing aesthetic integration and the ability to colour coordinate both the system and rigging to visual requirements. They can also be provided with protection for use in climatically hostile environments. The Q-Series, an additional and yet another exponent of the d&b System reality.



Q-Series	Q1	Q7	Q10	Q-SUB
Live music	■ <sup>2</sup>	■ <sup>1</sup>	■ <sup>1</sup>	■ <sup>1</sup>
Playback	■ <sup>2</sup>	■ <sup>1</sup>	■ <sup>1</sup>	■ <sup>1</sup>
Speech	■ <sup>2</sup>	■ <sup>1</sup>	■ <sup>1</sup>	■ <sup>1</sup>
Stage monitor				
Subwoofer				■
Components	2 x 10" / 1.3"	2 x 10" / 1.3"	2 x 10" / 1.3"	18"
Output (1m) <sup>3</sup> with D6/D12	135 / 139 dB SPL	134 / 138 dB SPL	133 / 137 dB SPL	129 / 133 dB SPL
Power rating <sup>4</sup>	400 / 1600 W	400 / 1600 W	400 / 1600 W	400 / 1600 W
Frequency response (-5 dB)	60 Hz - 17 kHz	60 Hz - 17 kHz	60 Hz - 17 kHz	40 Hz - 130 Hz
Dispersion (H x V)	75° x 15° <sup>5,6</sup>	75° x 40° CD <sup>5,6</sup>	110° x 40° CD <sup>5,6</sup>	
Cabinets per channel D6/D12	2	2	2	2
Dimensions mm (H x W x D)	308 x 380 x 410	580 x 308 x 410	580 x 308 x 410	493 x 380 x 668 <sup>7</sup>
Weight kg	22	22	22	42
Dimensions inch (H x W x D)	12.1 x 22.8 x 16.1	22.8 x 12.1 x 16.1	22.8 x 12.1 x 16.1	19.4 x 22.8 x 26.3 <sup>7</sup>
Weight lb	49	49	49	93

Application information is presented for guidance only. dBb reserves the right to make any necessary changes to the products and the published specifications. As part of the ongoing development program dBb tries to maintain the highest degree of product compatibility.

■: recommended use. CD: loudspeaker with constant directivity horn. <sup>1</sup>with subwoofer. <sup>2</sup>from 2 up to 20 as array. <sup>3</sup>SPL max/peak, test signal; pink noise with crest factor 4. <sup>4</sup>RMS/peak. <sup>5</sup>≧ 400 Hz in dipolar direction. <sup>6</sup>horn 90° rotatable for 40° x 75° / 110°. <sup>7</sup>dimensions without wheels.



Q1



Q7, Q10



Q-SUB

Q11

Q17, Q110

Q1-SUB, Q1CSA-SUB



Q-Series	Q11	Q17	Q110	Q1-SUB	Q1CSA-SUB
Live music	■ <sup>1,2</sup>	■ <sup>1</sup>	■ <sup>1</sup>		
Playback	■ <sup>1,2</sup>	■ <sup>1</sup>	■ <sup>1</sup>		
Speech	■ <sup>2</sup>	■	■		
Stage monitor					
Subwoofer				■	■
Components	2 x 10" / 1.3"	2 x 10" / 1.3"	2 x 10" / 1.3"	18"	18"
Output (1m) <sup>3</sup> with D6/D12	135 / 139 dB SPL	134 / 138 dB SPL	133 / 137 dB SPL	129 / 133 dB SPL	129 / 133 dB SPL
Power rating <sup>4</sup>	400 / 1600 W	400 / 1600 W	400 / 1600 W	400 / 1600 W	400 / 1600 W
Frequency response (-5 dB)	60 Hz - 17 kHz	60 Hz - 17 kHz	60 Hz - 17 kHz	40 Hz - 130 Hz	40 Hz - 130 Hz
Dispersion (H x V)	75° x 15° <sup>5</sup>	75° x 40° <sup>5</sup>	110° x 40° <sup>5</sup>		
Cabinets per channel D6/D12	2	2	2	2	2
Dimensions mm (H x W x D)	308 x 580 x 410	580 x 308 x 410	580 x 308 x 410	488 x 580 x 669	488 x 580 x 684
Weight kg	21	21	21	37	40
Dimensions inch (H x W x D)	12.1 x 22.8 x 16.1	22.8 x 12.1 x 16.1	22.8 x 12.1 x 16.1	19.2 x 22.8 x 26.3	19.2 x 22.8 x 26.9
Weight lb	46	46	46	81	88

Application information is presented for guidance only. dBb reserves the right to make any necessary changes to the products and the published specifications. As part of the ongoing development program dBb tries to maintain the highest degree of product compatibility.

■: recommended use CD: loudspeaker with constant directivity horn <sup>1</sup> with subwoofer <sup>2</sup> from 2 up to 20 as array <sup>3</sup> SPL max/peak, test signal; pink noise with crest factor 4 <sup>4</sup> RMS/peak <sup>5</sup> = 400 Hz in dipolar direction <sup>6</sup> horn 90° rotatable for 40° x 75° / 110°

## The T-Series. Loudspeakers with a twist.

Point source or line source? Admittedly an important question, but no longer a question of which loudspeaker system. Indeed due to its special design, the innovative T-Series offers two different loudspeaker technologies in one package: it delivers an impressive performance as the smallest d&b line array and with a twist of the wrist transforms into a stand-alone point source system. Adaptation from one application to the other is achieved without tools, through a unique combination of a rotatable horn coupled with an acoustic lens within the loudspeaker grill assembly. Both the T10 loudspeaker and the T subwoofer have integrated rigging that allows quick and simple deployment in a line source. The T-Series' functionality ranges from small to medium sized applications, from multiple cabinet line arrays through to single stand-alone loudspeakers. The unobtrusive visual design, compact dimensions, high power and exemplary directivity performance makes the T-Series loudspeakers the perfect option

for speech and music. The Ti loudspeakers are special versions of these established cabinets and along with the Ti subwoofers are designed for permanently installed rider driven performance spaces. The Ti cabinets differ only in their unobtrusive mounting hardware allowing aesthetic integration and the ability to colour coordinate both the system and rigging to visual requirements. They can also be provided with protection for use in climatically hostile environments. The B4 cardioid subwoofer can also be employed as an interesting alternative. It uses only one amplifier channel and as if it could be any other way, it acoustically matches all the loudspeakers within the T-Series. Suffice to say the T-Series revolves, but this time with a twist, around the d&b System reality. And vice versa.





T-Series	T10	T-SUB	B4-SUB	T10L	T10P	T1-SUB
Live music	■ <sup>1</sup>	■ <sup>1</sup>	■ <sup>1</sup>	■ <sup>1</sup>	■ <sup>1</sup>	■ <sup>1</sup>
Playback	■ <sup>2</sup>	■ <sup>2</sup>	■ <sup>2</sup>	■ <sup>2</sup>	■ <sup>2</sup>	■ <sup>2</sup>
Speech	■	■	■	■	■	■
Stage monitor	■	■	■	■	■	■
Subwoofer						
Components	2 x 6.5" / 1.4"	15"	Front 15" / Rear 12"	2 x 6.5" / 1.4"	2 x 6.5" / 1.4"	15"
Output Line/Arc setup (1m) <sup>3</sup> with D6/D12	129 / 132 dB SPL			129 / 132 dB SPL		
Output PS setup (1m) <sup>3</sup> with D6/D12	127 / 130 dB SPL			127 / 130 dB SPL		
Output (1m) <sup>3</sup> with D6/D12	127 / 130 dB SPL	127 / 130 dB SPL	128 / 131 dB SPL	127 / 130 dB SPL	127 / 130 dB SPL	127 / 130 dB SPL
Power rating <sup>4</sup>	200 / 800 W	300 / 1600 W	500 / 2000 W	200 / 800 W	200 / 800 W	300 / 1600 W
Frequency response (-5 dB)	68 Hz - 18 kHz	47 Hz - 140 Hz	40 Hz - 150 Hz	68 Hz - 18 kHz	68 Hz - 18 kHz	47 Hz - 140 Hz
Dispersion line source (H)	105°			105°		
Dispersion point source (H x V)	90° x 35°			90° x 35°		
Cabinets per channel D6/D12	4	2	2	4	4	2
Dimensions mm (H x W x D)	197 x 470 x 300	431 x 470 x 400	476 x 580 x 800	197 x 470 x 300	470 x 197 x 300	431 x 470 x 400
Weight kg	11	17	44	11	10	17
Dimensions Inch (H x W x D)	7.8 x 18.5 x 11.8	17 x 18.5 x 15.8	18.7 x 22.8 x 31.6	7.8 x 18.5 x 11.8	18.5 x 7.8 x 11.8	17 x 18.5 x 15.8
Weight lb	24	37	97	24	23	37

Application information is presented for guidance only. dBb reserves the right to make any necessary changes to the products and the published specifications. As part of the ongoing development program dBb tries to maintain the highest degree of product compatibility.

■ recommended use <sup>1</sup>with subwoofer <sup>2</sup>with a subwoofer suitable for music and high level program <sup>3</sup>SPL<sub>max</sub> peak, test signal, pink noise with crest factor 4 <sup>4</sup>RMS/peak

## The stage monitors. Heard but not seen.

Whether it is sound reinforcement for the audience or monitoring for the artist, who could deny that both are equally important for a successful performance? This is why the M2, M4, M6, MAX and MAX12 monitors not only have compact dimensions, more than adequate power, functional designs, exceptional performance,

remarkable vocal presence and clarity, but also uncompromisingly practice the maxims of the d&b System reality. Ease of operation, neutral sound reproduction, well defined dispersion, guaranteed high feedback stability even at the most extreme levels, realizing an efficient tool and a neutral platform for the engineer and artist alike.

d&b  
audioteknik  
d&b





M2

M4

M6

MAX

MAX12

Monitors	M2	M4	M6	MAX	MAX12
<b>Live music Playback</b>	■ <sup>1</sup>	■ <sup>1</sup>	■ <sup>1</sup>	■ <sup>1</sup>	■ <sup>1</sup>
<b>Speech</b>	■ <sup>2</sup>	■ <sup>2</sup>	■ <sup>2</sup>	■ <sup>2</sup>	■ <sup>2</sup>
<b>Stage monitor</b>	■	■	■	■	■
<b>Subwoofer</b>	■	■	■	■	■
<b>Components</b>	2 x 12" / 1.4" <sup>1</sup>	1.5" / 1.3" coaxial	12" / 1.3" coaxial	1.5" / 2" coaxial	12" / 2" coaxial
<b>Output (1m)<sup>3</sup> with D6/D12</b>	148 dB SPL	134 / 138 dB SPL <sup>4</sup>	132 / 135 dB SPL <sup>4</sup>	131 / 135 dB SPL <sup>4</sup>	130 / 134 dB SPL <sup>4</sup>
<b>Power rating<sup>5</sup> LOW</b>	500 / 2000 W	400 / 1600 W	400 / 1600 W	250 / 1200 W / 8Ω	250 / 1200 W / 8Ω
<b>Power rating<sup>5</sup> HIGH</b>	50 / 200 W				
<b>Frequency response (-5 dB)</b>	50 Hz - 17 kHz <sup>6</sup>	55 Hz - 17 kHz <sup>6</sup>	65 Hz - 17 kHz <sup>6</sup>	55 Hz - 18 kHz <sup>6</sup>	65 Hz - 18 kHz <sup>6</sup>
<b>Dispersion (H x V)</b>	45° x 60° CD <sup>7</sup>	50° x 70° CD <sup>8</sup>	50° x 80° CD <sup>8</sup>	60° conical	80° conical
<b>Cabinets per channel D6</b>	2 <sup>9</sup>	2 <sup>9</sup>	2 <sup>9</sup>	2 <sup>9</sup>	2 <sup>9</sup>
<b>Cabinets per channel D12</b>	2 <sup>10</sup>	2 <sup>11</sup>	2 <sup>11</sup>	2 <sup>11</sup>	2 <sup>11</sup>
<b>Dimensions mm (H x W x D)</b>	419 x 672 x 560 <sup>12</sup>	363 x 580 x 505 <sup>12</sup>	332 x 486 x 455 <sup>12</sup>	392 x 580 x 507 <sup>12</sup>	324 x 486 x 425 <sup>12</sup>
<b>Weight kg</b>	38	20	16	26	22
<b>Dimensions inch (H x W x D)</b>	16.5 x 26.5 x 22.1 <sup>12</sup>	14.3 x 22.8 x 19.9 <sup>12</sup>	13.1 x 19.1 x 18.1 <sup>12</sup>	15.4 x 22.8 x 20.1 <sup>12</sup>	12.8 x 19.1 x 16.7 <sup>12</sup>
<b>Weight lb</b>	83	44	35	57	48

Application information is presented for guidance only. dBb reserves the right to make any necessary changes to the products and the published specifications. As part of the ongoing development program dBb tries to maintain the highest degree of product compatibility.

■<sup>1</sup>; recommended use CD; loudspeaker with constant directivity horn <sup>1</sup> with subwoofer. <sup>2</sup> with a subwoofer suitable for music and high level program. <sup>3</sup> SPL<sub>max</sub> peak, test signal; pink noise with crest factor 4. <sup>4</sup> 140/138/136/135 dB SPL (M4/M6/MAX/MAX12) for 2-Way Active mode with D12. <sup>5</sup> RMS/peak. <sup>6</sup> with floor coupling. <sup>7</sup> ≥ 400Hz. <sup>8</sup> 90° rotatable for 70° (M4)/80° (M6) x 50° dispersion. <sup>9</sup> used in passive mode only. <sup>10</sup> used in 2-Way Active mode only. <sup>11</sup> used in passive mode, when used in 2-Way Active mode up to two loudspeakers per D12 may be connected. <sup>12</sup> overall dimensions (projected footprint)

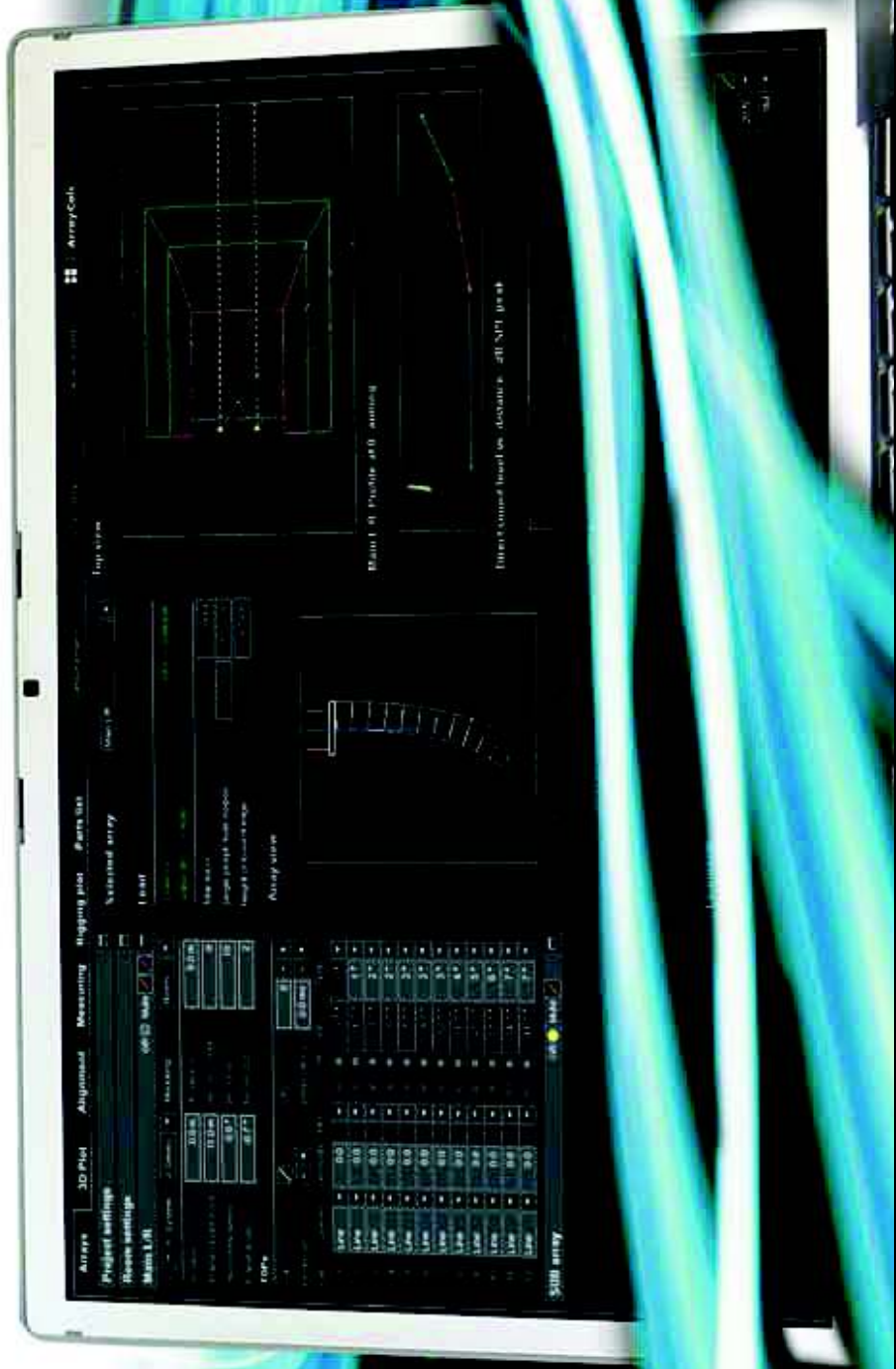
## Accessories. Not without the trappings.



Just as an example, the Pipe clamp, Horizontal bracket, Flying frame, or the Super clamp: these mechanical accessories clamp, fix, fly or attach d&b loudspeakers for all their worth. They not only adhere to the BGV C1 safety standard but to the ethos of the d&b System reality. In short, d&b offers more than a hundred accessories,

not only a selection of universal ones but Series specific as well, that have been meticulously tailor made for purpose. Trappings to adhere to.





**The ArrayCalc. Designing setups easily.**

## The power to control. Control of power.



Positioned at the very heart of the d&b System reality, the D6 and D12 dual channel amplifiers not only power, but comprehensively control the d&b loudspeakers by using Digital Signal Processing (DSP) to provide loudspeaker specific configurations and functions. The exception being that the D6 does not include 2-Way Active and B2-SUB configurations. The D6 is a 2 RU x 19" amplifier that weighs a mere 8 kg (17.6 lb), produces 600 W into 4 ohms and is the efficient and economical solution for small applications. It utilizes a switch mode power supply with PFC and overvoltage protection. The D12 has configurations for all current d&b loudspeakers and is a 3 RU x 19" amplifier constructed with a stainless steel body and aluminium front plate. It weighs in at 13 kg (28.7 lb) belying the strength of two times 1200 W into 4 ohm loads and covers the whole range of applications. It utilizes an autosensing switch mode power supply with overvoltage protection. Both channels of the D6 and D12 have user definable 4-band parametric equalizers with Boost/Cut or Notch filtering, a digital delay

capability of up to 340 msec and a signal generator offering pink noise or sine wave program for test and alignment purposes. d&b Load monitoring and System check are incorporated to monitor driver condition. The continuous Load monitoring function is designed for use in systems specified to the requirements stated in IEC 60849 'Sound systems for emergency purposes'. The rear panels contain all power, input and output connectors, remote sockets for monitoring and control, and a service interface. Both amplifiers have analog and AES/EBU digital signal inputs and the digital elements are specified and constructed to achieve audio performance, meeting or exceeding that of analog devices. Finally the D12 has selectable output configurations for dual channel, Mix TOP/SUB and 2-Way Active modes. It also provides d&b SenseDrive for use with the LF drivers in the d&b subwoofers and active loudspeakers resulting in an extremely precise bass performance. All the control with power.



## The remote control. For remote access.

The d&b Remote network allows control and monitoring of d&b loudspeakers from a virtual centre within a complete application, be it from a PC in the control room, at the mix position or on a wireless tablet PC in the auditorium. A prerequisite to unlocking the full potential of the d&b System reality is the Remote interface that is fitted to all d&b amplifiers allowing control signals to be daisy chained from one to another. To acquire access to all functions, controls and detailed system information, the Remote network requires a PC or Mac, the d&b R1. Remote control software and either a d&b R60 USB to CAN or R70 Ethernet to CAN interface, depending on whether a serial bus or a local area network is utilized. Equipped as such, controls and functions can be grouped together in whichever way the user requires allowing settings and specific adjustments to be

applied anywhere within the system. Loudspeaker configurations, input selection, System check and with the R10 Service software, firmware updates of multiple amplifiers can all be realized. Operation and control can be undertaken on loudspeakers and amplifiers individually, on multiple groups of loudspeakers or into groups that address the complete system. With the latter a button or fader can then be applied to control the overall system level, equalization and delay, power ON/OFF, mute and loudspeaker function switches; either at the setup, at the sound check, during the show itself or even more remotely when creating or editing an application in advance. This comfortable system control not only saves time, resources and energy, but helps to concentrate on the ultimate target: democracy for listeners.

# The d&b System reality. Working.



B018 Club, Beirut, Lebanon



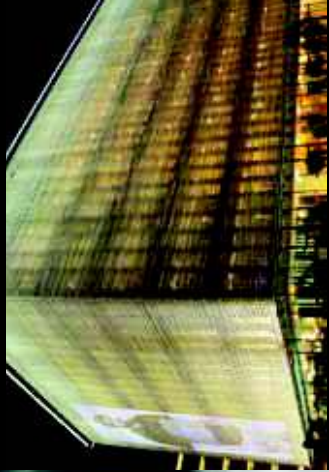
Empire Theatre, Toowoomba, Australia



Nexttop Club, Hanoi, Vietnam



Amr Diab Concert, El Alamein, Egypt



Onassis House of Arts and Letters, Athens, Greece



Sunfest, Palm Beach, USA



Christusstag, Bern, Switzerland



Corby Cube Theatre, England



Lili Marleen Club, Guangzhou, China



An Dong Arts Centre, South Korea



Brutal Assault Metal Festival, Prague, Czech Republic



Eurovision Song Contest, Düsseldorf, Germany



Day of the Republic Concert, Yerevan, Armenia



Sound Tribe Sector 9, Red Rocks Amphitheatre, USA



Mercedes-Benz Museum, Stuttgart, Germany



Trilogy Club, Mumbai, India



True Metal Stage, Wacken Open Air, Germany



Running on Waves, Luxury Cruiser, Russia



ORF Studio, Linz, Austria



Corporate Event, Sun Dome Arena, Fukui, Japan



Grand Canal Theatre, Dublin, Ireland



Hasseris Church, Aalborg, Denmark



Glastonbury Festival, The Other Stage, England



Primerica Corporate Event, Atlanta Georgia Dome, USA



Quindao Grand Theatre, China



Vlaamse Opera, Antwerp, Belgium



Olympia Stadium, Helsinki, Finland



The Michael Clark Company at Tate Modern, London, England



Oviedo Filamonia Concert, Spain



Photo: Paul Kolink

War Horse, Lincoln Center Theatre, New York, USA



State Chancellery of Brandenburg, Potsdam, Germany



Nossa Senhora de Fátima Cathedral, Benguela, Angola



Paradise Community Church, Adelaide, Australia



Royal Scottish Academy of Music and Drama, Glasgow, Scotland



Foo Fighters (Monitors), Lanxess Arena, Cologne, Germany



Harrah's Cherokee Casino, USA





Megacomplex GRINN, Retail and Entertainment Centre, Orel, Russia



Chivas Stadium, Guadalajara, Mexico



Photo: David Cannon Studio

Salle Albert-Rousseau, Québec City, Canada



Ocean Park, Hong Kong, China



Gessi Conference Room, Vercelli, Italy



International Motor Show (IAA), Frankfurt, Germany



Giovanni Allevi Concert, Rome, Italy



Mandurah Performing Arts Centre, Australia



Ontario House, Winter Olympic Village, Vancouver, Canada



Heineken Jazz Festival, Gran Canaria, Spain



Jones Hall Theatre, Houston, USA



Hillsong Conference, O2 Arena, London, England

